



COOKER HOOD
USER INSTRUCTIONS



EMHAETTE
BRUKGERVEJLEDNING



HRVATSKI



DUNSTABZUGSHAUBE
GEBRAUCHSANWEISUNG



LIESITUULETIN
KAYTTOOHJE



دليل استخدام



HOTTE PER CUISINE
MANUEL D'UTILISATION



ВБИТЯЖКА
ИНСТРУКЦИИ ПО ЭКСПЛУАТАЦИИ



SLOVENIJA



CAPPA ASPIRANTE
MANUALE D'USO



OPAKA
INSTRUKCJE UZYKOWNIK



FYROM



CAMPANA EXTRACTORA
MANUAL DE UTILIZACION



ΑΠΟΡΡΟΦΗΤΗΡΑΣ
ΟΔΗΓΙΕΣ ΧΡΗΣΕΩΣ



СРБИЈА



COIFA ASPIRANTE
MANUAL DO USUARIO



ROMANA



LATVIEŠU VALODĀ



AFZUIGKAP
GEBRUIKSAANWIJZING



PARAELSZIV
HASZNÁLATI ÚTMUTATÓ



TÜRKÇE



FLÄKTKÅPA
BRUKSANVISNING



ODSAVAC
NÁVOD K POUŽITÍ



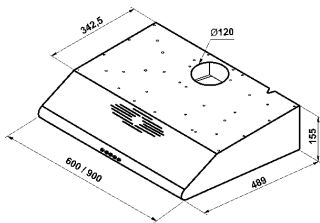
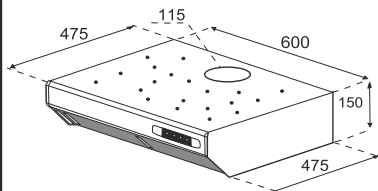
VENTILATOR
BRUKERVEILENDNING



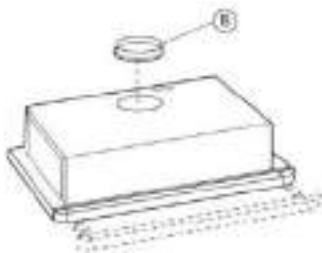
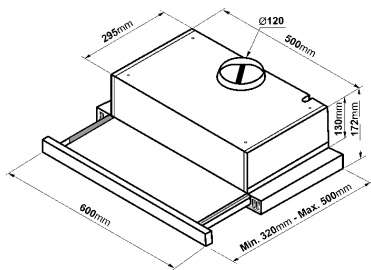
BULGARIA



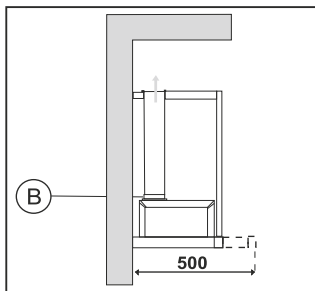
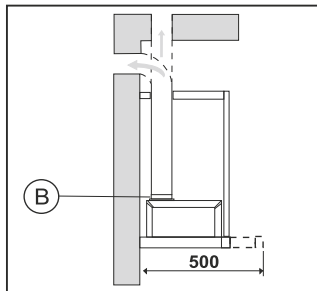
CLASSIC COOKER HOOD



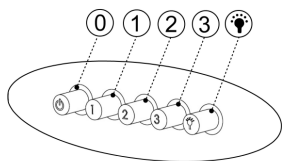
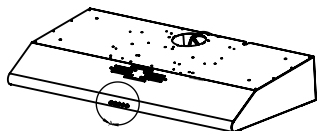
BUILT-IN HOOD



BUILT-IN HOOD



CONTROL PANEL



On / Off



Motor runs on Level 1



Motor runs on Level 2

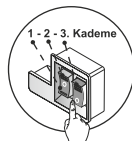
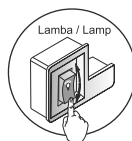
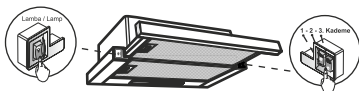
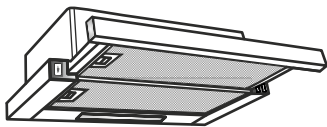


Motor runs on Level 3



Lamp On / Off

CONTROL PANEL



1 Lighting

▼ Light On / Off

2 Fans

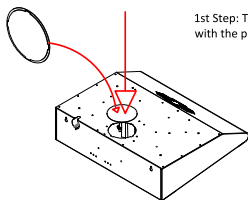
0 Fan Off

1 Fan level 1

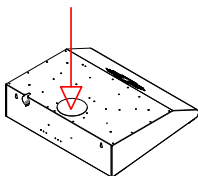
2 Fan level 2

3 Fan level 3

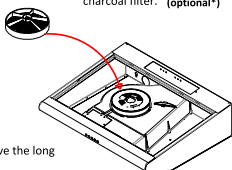
RECIRCULATION MODE



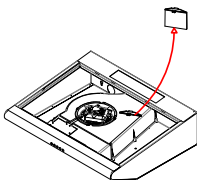
1st Step: The exhaust hole will be closed with the plastic cover.



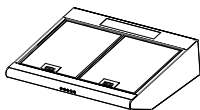
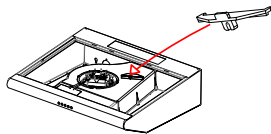
Step 2: Place the charcoal filter. (optional*)



Step 3: Remove the long plastic part.



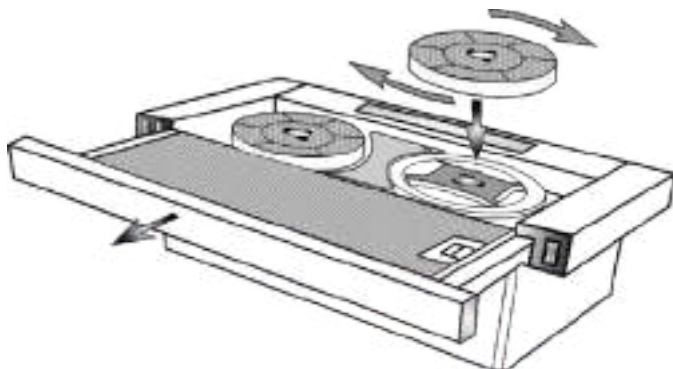
4th Step: Put the short plastic part.



THE HOOD IS READY FOR USE.

* For the purchase of carbon filters, please contact your dealer to obtain the corresponding reference to your model.

Replacing the Active Carbon Filter (Circulating air mode only)



To maintain odor insulation levels, regular care of the filter is necessary. The active carbon filter should be replaced every 4 months.

Information

- Active carbon filters are not included in the delivery. Active carbon filters may be purchased from your dealer, customer services or a store online.
- Active carbon filters cannot be cleaned and reused.

1. Remove the metal grease filter,
2. Turn the old active carbon filter and pull it from its slot,
3. Place a new active carbon filter in the slot, press it down and turn it,
4. Reinstall the metal grease filter,

Dear User

Our aim in presenting you this manual is to ensure that you can use our aspirators, produced with the state of the art technology within our modern facilities and supplied to the market subsequent to strict quality controls, in the most efficient way. We recommend your esteemed side read carefully this manual and keep it handy to use it again if required prior to providing information of usage.

WHAT TO DO BEFORE INSTALLATION AND USAGE

1. Do not connect the exit of your aspirator to flues where devices like stoves or water heaters are connected and where there is circulation of hot gases.
 2. The distance between the bottom surface of your aspirator and the upper surface of electric ovens should be 65 cm stove while the distance should be 75 cm stove between the bottom surface of your aspirator and the upper surface of ovens using gas or mixed fuels . Otherwise, the product will be definitely out of warranty!
 3. Insert the plug of your aspirator to the socket when all the usage switches on the control panel are in closed position.
 4. Installation and wiring should be carried out through our authorized services. Our company is not responsible from failures arising due to installation by third parties.
 5. Be careful that the power cord is not compressed and crushed during installation. A hole through which the plug of the aspirator can pass easily must be opened without cutting the aspirator cord and installation must be carried out in this way. If the power cord is damaged it must be replaced through our authorized services.
 6. If the supply cord is damaged, this cord must be replaced by the manufacturer or its service agent or equally qualified personnel to prevent a dangerous situation.
 7. Flaming foods should not be cooked under the device. They may cause fire.
 8. The air discharge pipe should be aluminum. The air discharge pipe should have a length of 120 mm. and louver culvert should be assembled to the outlet at the exterior without fail. Place the pipe for flue outlet outside never narrowing the diameter of the pipe (120 mm)
 9. Do not use non-fire-resistant filtering materials (such as paper) on the filter.
 10. Turn the unit off and take the plug from the socket prior to the maintenance process.
 11. Use max 6 amp fuse for your safety.
- NOTE: Your aspirator is produced to work with and without flue connection.

USAGE WITH FLUE

There is an air exit on your aspirator. Flue connection will be made from this air exit. A flue adapter suitable for 120 mm diameter is supplied with the aspirator. It is recommended to use spiral pipe with a diameter of 120 mm in the flue pipe. Pipe connection should be as short as possible and with least number of elbows for efficient operation of your aspirator.

USAGE WITHOUTFLUE

Closest shelves or cabinet ceilings that may prevent the outlet pipe should be cut in the same size to ensure air circulation in the kitchen. The air sucked by the aspirator is given into the kitchen in usage without flue. A culvert should be installed to the mouth of the pipe on the facade. Replace your carbon filter every 3 months in average.

FILTER CHANGE (WASHING)

- * Remove the cassette filter by pushing the latches inside.
- * Place one side of the filter into the house and secure the filter by pressing inside and leaving the latch of the other side.

IMPORTANT NOTICE

1. The distance between the bottom surface of your aspirator and the upper surface of electric ovens should be 65 cm stove while the distance should be 75 cm stove between the bottom surface of your aspirator and the upper surface of ovens using gas or mixed fuels . Otherwise, the product will be definitely out of warranty!
2. Place the flue exit in the same diameter (without making it smaller).
3. Do not operate your aspirator without filter.
4. Do not change the filter while your aspirator is running.
5. Operate your aspirator while you operate your stove.
6. Do not open your aspirator when you feel a gas leak.
7. Wipe your aspirator with cloth soaked in warm water with detergent and dry.
8. You may use the aluminum filter by washing at least once a month
9. Replace the oil filter with synthetic fiber every 2 months
10. Replace the imported carbon filter every 3 months in use without flue.
11. Ventilation of the room should be sufficient if you are operating your aspirator with products using gas or similar fuel at the same time.
12. Ensure that the children and people with physical and mental disabilities do not use the appliance.

MOUNTING AND INSTALLATION OF THE EXTRACTION HOOD

There are 2 eyelet marks on the back part of your hood for hanging the hood.

1. Determine the place of the hood which has to be hanged on a plane surface and at a height of 65 cm from the oven and mark the hanging hole places.
2. Use a 08 mm drill for drilling and drive the screws by placing dowels.
3. Hang the hood by using the hanging screws and fix it.
4. There are 2 flues in the parcel of the hood. The short flue is used for setting the height and the short flue will be placed in the long flue.
5. Place both flues on the hood at the same time. Make the flue height adjustment by sliding the short height adjustment flue from inside upwards.

Drill the 2 eyelet marks on the back part of the hood and hang the hood on the wall by placing dowels and the screws. Place the long flue on the hood by sliding it down in the short flue. In this way assembly of the hood will be completed.